

SFrealestate.com

SALES • LEASING • CONSULTING • MANAGEMENT

Jay Pon

415.409.8858

jpon@jps.net

Mark McNee

415.967.2637

mark@mcnee.net



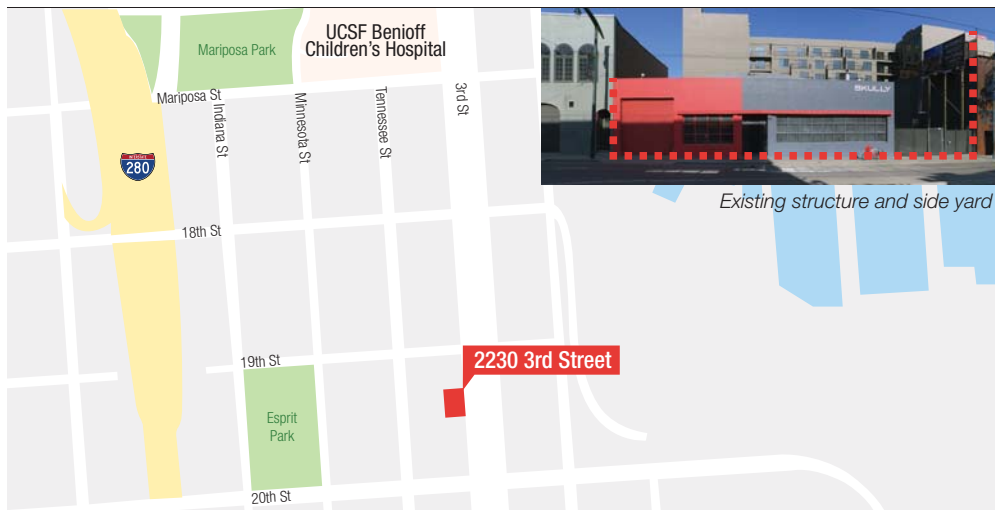
For Sale

San Francisco

*Dogpatch
Life Science/Medical
Development Site*

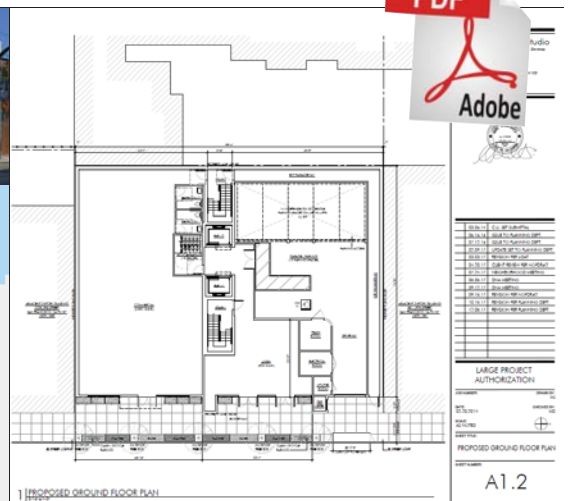
2230 3rd St, San Francisco, CA 
APN# 4059-001C

- Sale of an entitled development site to construct a six floor, $\pm 36,507$ ft² medical/life science building with $\pm 2,987$ ft² of ground floor commercial space
- Lot size is approximately 8,000 ft²
- Zoning is UMU; Life Science and Medical Special Use District
- Height limit is 68-X
- The existing building is a $\pm 5,600$ ft² warehouse building with side yard
- Building is vacant; There is an outdoor advertising sign in the yard
- Close to MUNI lines T, 22 & 48; Nearest Caltrain station is 22nd St



Existing structure and side yard

Click For



The information contained herein has been obtained from sources we deem reliable but is not guaranteed. Prospective buyers are advised to independently verify accuracy and to review any disclosure information on file with this office. This property statement is dated May 19, 2018 and replaces any previously dated or undated version. Information on this statement changes periodically; Prospective buyers are advised to contact our office to ensure they have the most current property statement. Square footage references should be verified by buyer using qualified professionals. To be removed from our distribution list call 415.967.2637. CA BRE License Information: SFrealestate.com #02006673; Jay Pon #01203843; Mark McNee #01464307.

SFrealestate.com

SALES • LEASING • CONSULTING • MANAGEMENT